

LANAIR PARK PATIO HOMES

BEING A REPLAT OF LOTS 1 & 2, BLOCK 4

LANAIR PARK (P.B. 21, PG. 58)

situate in Section 5, Township 45 South, Range 43 East
Palm Beach County, Florida.

114

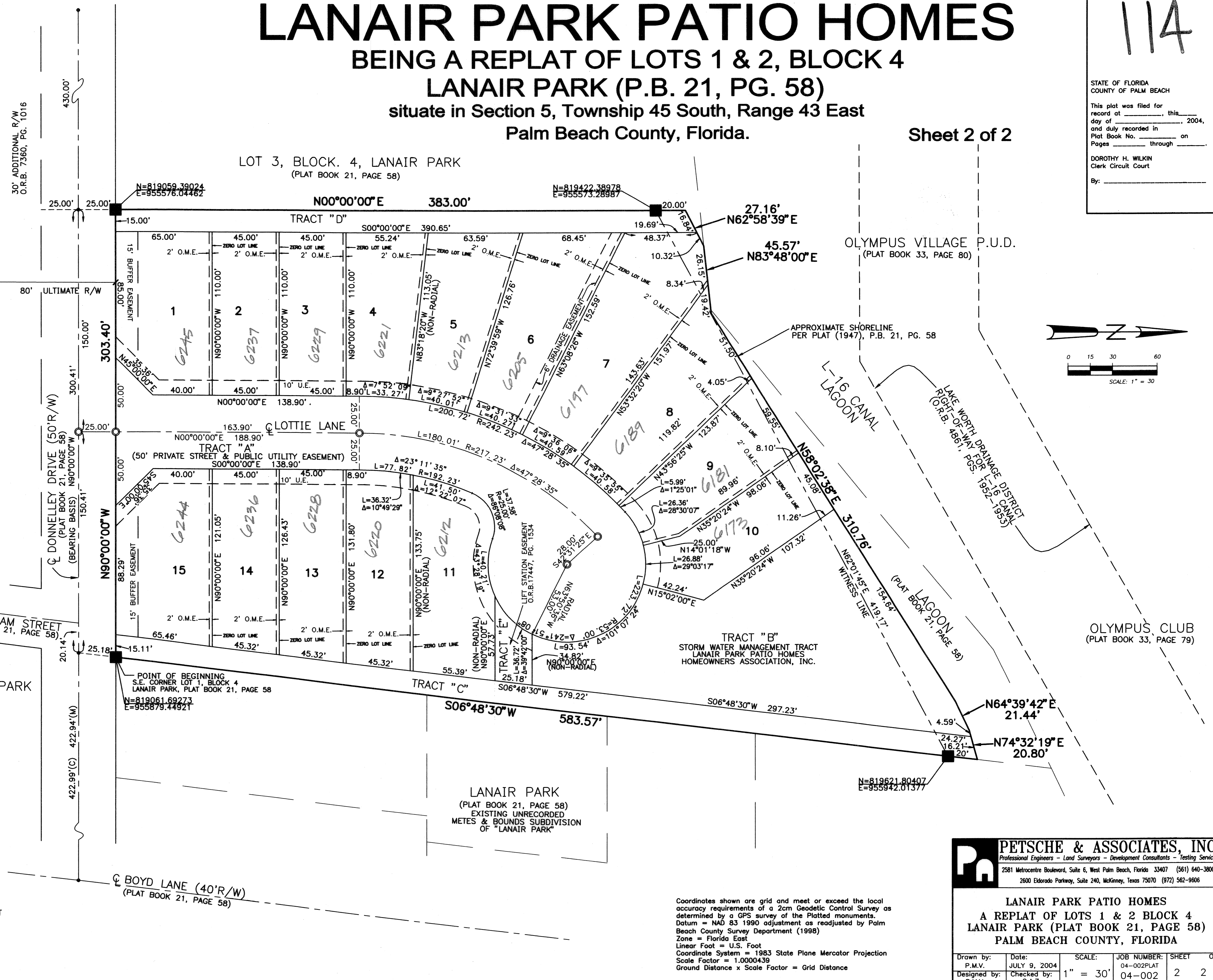
STATE OF FLORIDA
COUNTY OF PALM BEACH

This plat was filed for
record at _____, this _____
day of _____, 2004,
and duly recorded in
Plat Book No. _____ on
Pages _____ through _____.

DOROTHY H. WILKIN
Clerk Circuit Court
By: _____

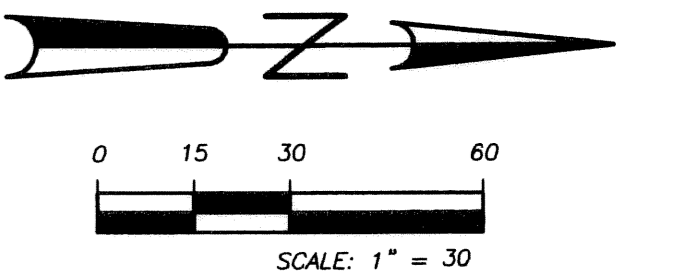
Sheet 2 of 2

LOT	AREA S.F.
Lot 1	6838
Lot 2	4950
Lot 3	4950
Lot 4	5392
Lot 5	6075
Lot 6	7174
Lot 7	8963
Lot 8	6900
Lot 9	5947
Lot 10	9713
Lot 11	6901
Lot 12	6011
Lot 13	5810
Lot 14	5568
Lot 15	7304
ROAD TRACT A	24603
Tract B	22498
Tract C	8721
Tract D	5602
Tract E	1061



FREEDOM VILLAGE LAKESIDE
(PLAT BOOK 71, PAGE 65)

OLYMPUS VILLAGE P.U.D.
(PLAT BOOK 33, PAGE 80)



LOT 4, BLOCK. 1, LANAIR PARK
(PLAT BOOK 21, PAGE 58)

TRACT "B"
STORM WATER MANAGEMENT TRACT
LANAIR PARK PATIO HOMES
HOMEOWNERS ASSOCIATION, INC.

OLYMPUS CLUB
(PLAT BOOK 33, PAGE 79)

LEGEND

- D.E. DRAINAGE EASEMENT
- U.E. UTILITY EASEMENT
- P.B. PLAT BOOK
- O.R.B. OFFICIAL RECORD BOOK
- P.C. POINT OF CURVATURE
- P.T. POINT OF TANGENCY
- P.O.C. POINT OF COMMENCEMENT
- P.O.B. POINT OF BEGINNING
- P.C.P. PERMANENT CONTROL POINT
- P.R.M. PERMANENT REFERENCE MONUMENT
- R/W RIGHT-OF-WAY
- REF. REFERENCE
- SEC. SECTION
- TWP. TOWNSHIP
- RAD. RADIAL
- RGE. RANGE
- P.L.S. PROFESSIONAL LAND SURVEYOR
- L.B. LICENSED BUSINESS
- TYP. TYPICAL
- N.R. NON-RADIAL
- O.M.E. OVERHANG & MAINTENANCE EASEMENT

SUBDIVISION LANAIR PARK PATIO HOMES
BOOK 103 PAGE 114
FLOOD ZONE X FLOOD MAP # 175 B
QUAD # 19 ZONING R1A
SE ZIP CODE 33462
TAZ 40B
FUD NAME LANAIR PARK

Coordinates shown are grid and meet or exceed the local accuracy requirements of a 2cm Geodetic Control Survey as determined by a GPS survey of the Platted monuments. Datum = NAD 83 1990 adjustment as readjusted by Palm Beach County Survey Department (1998) Zone = Florida East Linear Foot = U.S. Foot Coordinate System = 1983 State Plane Mercator Projection Scale Factor = 1.0000439 Ground Distance x Scale Factor = Grid Distance

PETSCHÉ & ASSOCIATES, INC.
Professional Engineers - Land Surveyors - Development Consultants - Testing Services
2581 Metrocentre Boulevard, Suite 6, West Palm Beach, Florida 33407 (561) 640-3800
2600 Eldorado Parkway, Suite 240, McKinney, Texas 75070 (972) 562-9606

LANAIR PARK PATIO HOMES
A REPLAT OF LOTS 1 & 2 BLOCK 4
LANAIR PARK (PLAT BOOK 21, PAGE 58)
PALM BEACH COUNTY, FLORIDA

Drawn by: P.M.V.	Date: JULY 9, 2004	SCALE: 1" = 30'	JOB NUMBER: 04-002PLAT	SHEET OF: 2 2
Designed by: P.M.V.	Checked by: C.A.Z.		04-002	